

Stars on the skyline

Like stars, World Trade Center buildings define the skylines of cities around the world. A WTC building is iconic: a signature real estate development and a premier business address. It follows that WTC certification is awarded only after rigorous assessment and scrutiny by the World Trade Centers Association (WTCA).

We join the galaxy...

We are proud and delighted that our 32-level office tower in Bangalore has been selected to join the stellar WTC galaxy. (Ours is the second building in India to be accorded the honour; the first is in Mumbai.) Now known as World Trade Center Bangalore (or WTC Bangalore), our building will share in a brand that is synonymous with cutting edge technology and reflects the economic growth and strength of the region it represents.

So our theme for 2011...

Our new calendar seemed an ideal place to celebrate this very significant event in Brigade's history. In a way, this is a natural progression in our calendar themes. We began with pure sculpture and art; we move on to documenting works of art on a much larger scale.

So, in our new calendar we take you to a few WTC buildings around the world and to our own WTC Bangalore. We also give you a quick glimpse of WTC Bangalore's immediate setting—the Brigade Gateway enclave, designed to meet our vision of: "...creating places that enrich how people work, play, heal, worship, discover, learn and travel—places that improve how people live".



BRIGADE
GROUP

For a better quality of life,
upgrade to Brigade

We wish you a happy & prosperous 2011

"WTC is the most recognised business address anywhere in the world...The new World Trade Center Bangalore, at Brigade Gateway, is a world class business destination and will quickly become a symbol of international trade for the greater Bangalore region."

—Robert Frueh,
Director of Member Services,
World Trade Centers Association.

THE BEST ADDRESS YOUR OFFICE COULD HAVE IN BANGALORE

WTC BANGALORE PHOTOGRAPHED FROM GALAXY CLUB



WORLD TRADE CENTER®
BANGALORE
AT BRIGADE GATEWAY



WORLD TRADE CENTER AMSTERDAM

M	T	W	T	F	S	S
31					1 NEW YEAR	2
3	4 NEW MOON	5	6	7	8	9
10	11	12	13	14	15 MAKARA SANKRANTHI	16
17	18	19 FULL MOON	20	21	22	23
24	25	26 REPUBLIC DAY	27	28	29	30

January 2011



Birth of a New Icon

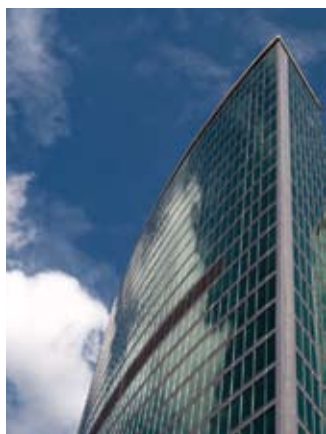


A World Trade Center or WTC can be a catalyst to economic growth, offering benefits to both the region and community it represents.

Our World Trade Center Bangalore (or WTC Bangalore) at Brigade Gateway will share in a brand seen on some of the world's most prestigious buildings, each of which is an icon in its own right—by virtue of architectural integrity, aesthetic appeal and the repute of its tenant organisations.

An additional distinction

WTC Bangalore has one noteworthy distinction setting it apart from many other WTC buildings—its unique location. WTC Bangalore is set within a 40-acre mixed-use enclave close to the CBD. The Brigade Gateway enclave, in Malleswaram-Rajajinagar, is a 'lifestyle enclave' whose facilities include one of the biggest malls in the city, a 200-bed multi-specialty hospital; the Sheraton Bangalore Hotel, a 9-level car park, a 1200+ apartment residential section, a club and a school.



A VIEW OF WTC BANGALORE.

Leveraging the WTC brand

Apart from singular brand value, being a tenant of a WTC building brings with it membership to one of the world's most respected business communities. And to the facilities and services available through the World Trade Centers Association's (or WTCA's) network of nearly 300 WTCs in 100 countries (serving more than 750,000 affiliated businesses).

A signature real estate development

WTC is the most sought after business address in the world. WTC Bangalore is the best address your office could have in Bangalore.

One of India's leading property developers



HULKUL BRIGADE CENTRE, THE CORPORATE OFFICE

Brigade is an established name, with a reputation for innovation, quality and trust. Our diverse portfolio in property development covers residential, commercial and hospitality domains in South India. With a strategy that focuses on leveraging our experience, expertise and established track record, Brigade Group is poised to achieve new heights in both real estate and hospitality.

Our vision to provide world-class living and working environments has been strengthened by our ISO 9001:2008, ISO 14001:2004 (Environmental Management System) and OHSAS 18001:2007 (Occupational Health and Safety Assessment System) certifications. Brigade featured in the prestigious "200 Best Under a Billion" Forbes' List for the Asia Pacific region in 2008. In 2009 and 2010, we received the "Regional Developer of the Year-South" Award from Realty Plus. In a poll by Construction World, Brigade was recognised as one of "India's Top Ten Builders" for the fourth consecutive year in 2010. We were awarded the "Best Developer in Residential Infrastructure 2010" by Construction Source India. The Brigade School at Mahadevapura, constructed by JMC, was awarded the ICI (KBC)-Birla Super Endowment Award for Outstanding Concrete Structure of Karnataka, 2010 by the Indian Concrete Institute, Bangalore.

BRIGADE'S DIVERSE PRODUCT MIX:

Apartments & Integrated Enclaves • Villas • Offices • IT Parks • SEZs
Malls & Multiplex • Hotels & Resorts • Serviced Residences
Clubs • Convention Centres • Schools

BANGALORE • CHENNAI • CHIKMAGALUR • HYDERABAD
KOCHI • MANGALORE • MYSORE

Corp. Office: Brigade Enterprises Limited,
Hulkul Brigade Centre, 82, Lavelle Rd, Bangalore 560001, INDIA
(From Q2 2011: WTC Bangalore@Brigade Gateway, Dr Rajkumar Road, Malleswaram-Rajajinagar)
Ph: +91-80-40467600 / 41379200 Fax: +91-80-22210784 enquiry@brigadegroup.com

Chikmagalur: Kadir Nivas, Opp. Mountain View School,
Vidyannagar, Chikmagalur 577102 Ph: +91-8262-222448

Kochi: 213, Panampally Nagar, Kochi. Ph: +91-484-4044494

Chennai: Old No: 31A, New No: 2, Cathedral Garden Rd,
Nungambakkam, Chennai 600034. Ph: +91-44-43587017

Dubai: P.O. Box No. 49191, #708, Atrium Centre, Bank Street, Bur Dubai
Ph: +971-4-3555504 Mob: +971-50-1888604 Fax: +971-4-3555541 dubai@brigadegroup.com

BrigadeGroup.com

Holidays / Festivals in January

- 1 New Year's Day (R, RB)
- 8 Second Saturday (S)
- 15 Makara Sankranti / Pongal (S)
- 26 Republic Day (C, S)

S—State
C—Central
R—Restricted
RB—Restricted in Brigade



WORLD TRADE CENTER BANGALORE AT BRIGADE GATEWAY

M	T	W	T	F	S	S
	1	2	3	4	5	6
7	8	9	10	11	12	13
14	15	16 <small>ID-MILAD</small>	17	18	19	20
21	22	23	24	25	26	27
28						

February 2011



Meaning of the WTC Brand



The World Trade Center brand, seen on some of the world's most prestigious buildings, symbolises locally-focused economic strength in world commerce. It is synonymous with cutting-edge technology, international business and trade. The World Trade Center brand has two distinct components:

Component 1: The Building

A World Trade Center is a signature real estate project and a premier business address. Anchored by a unique combination of tenants and visitors, a typical WTC is usually a bustling hub of export activity.

Component 2: WTC Services

A WTC offers its members and tenants a wide range of facilities and services. Since WTC services are reciprocal, members can access them at all operating WTCs around the world, as per norms.

Services on offer include:

- trade information
- education
- WTC clubs
- exhibit facilities
- consulting services
- administrative support
- export / import assistance
- special telecommunications systems
- translation / interpretation
- trade missions
- office services
- newsletters
- trade policy research, among others.

This enhances value, by making it easier for tenants and their clients to conduct 'one-stop shopping'. This added value also serves the building with investment-grade tenants, who are often leaders in international trade and commerce.

We introduced Bangalore to a luxury called "enclave"...



BRIGADE METROPOLIS, MAHADEVAPURA, WHITEFIELD RD

Brigade pioneered the concept of 'integrated enclaves' in Bangalore. Conceptualised as self-contained communities, these enclaves contain apartment complexes, commercial and retail spaces, hotels, clubs, parks, water bodies, schools and parking facilities.

Brigade Gardenia and Brigade Millennium, both in J. P. Nagar, set the benchmarks for enclave living in Bangalore. They incorporated features and facilities that brought new dimensions to everyday life and living.

Benchmarks, however, are created to be surpassed. So then came Brigade Metropolis and Brigade Gateway—which combined many path-breaking elements to create environments that were satisfyingly larger than the sum of their parts.

Brigade Metropolis is a 40-acre enclave in Whitefield that includes a residential section with **1600+ apartments**; landscaped theme gardens; **The Regent Cub** with sports, recreation and health facilities; **Summit** office towers with 8,30,000 sft of state-of-the-art space, spread across two towers connected by sky-bridges; a helipad; and **Arcade**, the 80,000-sft neighbourhood shopping centre which also contains office space. **The Brigade School** is nearby. A vibrant community of Metropolitan benefit from a very empowering and enjoyable enclave life.

Brigade Gateway, in the Malleswaram-Rajajinagar region of Bangalore, is our other major enclave. Read about it in the theme text of the calendar.

Ph: +91-80-40467666 Fax: +91-80-22210784 salesenquiry@brigadegroup.com
BrigadeGroup.com

Holidays / Festivals in February

- 12 Second Saturday (S)
- 16 Id-Milad (C, S, RB)

S—State
 C—Central
 RB—Restricted in Brigade



WORLD TRADE CENTER BARCELONA

M	T	W	T	F	S	S
	1	2 MAHA SHIVARATRI	3	4	5	6
7	8	9	10	11	12	13
14	15	16	17	18	19	20
21	22	23	24	25	26	27
28	29	30	31			

March 2011



A Strategic Location



Bangalore has long-deserved—and finally been awarded—its own World Trade Center.

WTC Bangalore is located in the 40-acre Brigade Gateway mixed-use enclave which, like an impossible-dream-come-true, is centrally located in the Malleswaram-Rajajinagar region. The enclave is ideally placed to cater to the residential, commercial, business, leisure and entertainment needs of the region.

In the vicinity...

In the Indian tradition of past and present living in happy co-existence, old icons rub shoulders with modernity. In the vicinity of Brigade Gateway, you will also find:

- The sprawling ISKCON temple.
- Several of Bangalore's best luxury hotels, within a convenient distance. (Quite apart from Sheraton Bangalore Hotel—which is inside the Brigade Gateway enclave!).
- Orion Mall (part of the enclave).
- Educational institutions covering different levels and disciplines. (The enclave is home to The Brigade School @ Malleswaram.)
- The multi-specialty Columbia Asia Hospital (within the enclave).

Connectivity and transportation

The enclave is well connected to the airport, downtown and other localities in Bangalore. The new Metro Rail, ring roads, extensions and flyovers will make access to Brigade Gateway—by private or public transport—even more convenient.

BRIGADE *The Signature Collection*



BRIGADE CRESCENT, NANDIDURG ROAD

Brigade Crescent, Nandidurg Road
Premium 4-bedroom apartments

Brigade Sonata, Palace Rd, next to Mt Carmel College
Premium 3-bedroom apartments

Brigade Rhapsody, Palace Cross Rd
Premium 4-bedroom apartments

Brigade Petunia, Jayanagar-Banashankari
Premium 3- and 4-bedroom apartments and penthouses

Penthouses @ Brigade Gateway, Malleswaram-Rajajinagar
Premium 3- and 4-bedroom penthouses

Villas @ Brigade Orchards, Devanahalli
120-acre mixed-use project

Villas and Townhouses @ Brigade Palmgrove
Bogadi Road (Mysore)

Ph: +91-80-4046 7666 Fax: +91-80-2221 0784
salesenquiry@brigadegroup.com **BrigadeGroup.com**

Conversion Factors

1 inch	= 2.54 cm	1 sqm	= 1.196 sq yards
1 foot	= 30.48 cm	1 sq yard	= 0.836 sqm
1 metre	= 3.281 feet	1 acre	= 43560 sft
1 yard	= 0.914 metre	1 acre	= 0.4047 hectare
1 km	= 0.621 mile	1 hectare	= 2.471 acres
1 mile	= 1.609 km	1 HP	= 0.746 KW
1 sqm	= 10.764 sft		

Holidays / Festivals in March

2	Mahashivaratri (S, RB)	S—State
12	Second Saturday (S)	R—Restricted
19	Holi (R, RB)	RB—Restricted in Brigade



WORLD TRADE CENTER OSAKA. PREFECTURAL GOVERNMENT SAKISHIMA BUILDING & TOWER

M	T	W	T	F	S	S
				1	2	3
4 CHANDRAMANA UGADI	5	6	7	8	9	10
11	12	13	14 DR AMBEDKAR JAYANTHI	15	16 MAHAVEERA JAYANTHI	17
18	19	20	21	22 GOOD FRIDAY	23	24
25	26	27	28	29	30	

April 2011



For a better quality of life,
upgrade to Brigade



WORLD TRADE CENTER®
BANGALORE
AT BRIGADE GATEWAY

**A Signature Real Estate Development.
The Best Address your Office could have in Bangalore.**

Location

- In a premium neighbourhood—the 40-acre Brigade Gateway integrated lifestyle enclave.
- In the Malleswaram-Rajajinagar area, close to the central business district.

Spaces

- 4,000 sft onwards.
- Ideal for: Corporate offices, IT / ITES and Software development facilities.

Unique Features

- 1.1 million sft of prime office space.
- Grade A++ specifications.
- 32 levels, 128 m high.
- Modular design with 40,000 sft floor plate.
- 4.2 m floor-to-floor height.
- Grand triple height atrium.
- Helipad and observation deck.
- Sky bridges connecting WTC with the 5-star Sheraton Bangalore Hotel and Orion Mall.
- 9-level parking facility.
- 21 high-speed elevators, of which some are destination controlled.
- Low E- glass to minimise heat and maximise visibility.
- Double glazing to minimise noise and power loss.
- Uninterrupted power supply with 100% power back-up.
- Cafeteria.
- Highest levels of safety and security.
- Designed by H.O.K., New York—one of the world's leading architectural firms.



WTC BANGALORE'S 3-STOREY HIGH ATRIUM.

Residential and Commercial projects
in Mysore



BRIGADE PALMGROVE, BOGADI ROAD



BRIGADE HORIZON, SIDDHARTHA LAYOUT

Brigade Palmgrove, Bogadi Road
Villas and Townhouses

Brigade Horizon, Siddhartha Layout
2- and 3-bedroom luxury apartments

Brigade Sparkle, J.P. Nagar
2- and 3-bedroom apartments

Brigade Vantage, Vinobha Road
Retail space

Brigade Point, Gokulam Road
Retail and Office space

Mysore Branch: Brigade Point, 2963, 3rd Floor
Gokulam Road, V. V. Mohalla, Mysore 570 002, INDIA.
Ph: +91-821-251 1239 Fax: +91-821-425 2239
salesenquiry@brigadegroup.com **BrigadeGroup.com**

Holidays / Festivals in April

- 4 Chandramana Ugadi (S)
- 9 Second Saturday (S)
- Sri Ramanavami (R)
- 14 Vishu / Ambedkar Jayanthi (C, S, RB)
- 16 Mahaveera Jayanthi (C, S, RB)
- 22 Good Friday (C, S, RB)

S—State
C—Central
R—Restricted
RB—Restricted in Brigade



WORLD TRADE CENTER BANGALORE AT BRIGADE GATEWAY

CONCEPT IMAGE

M	T	W	T	F	S	S
30	31					1 MAY DAY
2	3	4	5	6 BASAVA JAYANTHI	7	8
9	10	11	12	13	14	15
16	17	18	19	20	21	22
23	24	25	26	27	28	29

May 2011



**Brigade Gateway:
The Mixed-use Lifestyle Enclave**

Brigade Gateway is a 40-acre mixed-use enclave. It has been conceptualised as a true lifestyle enclave, to meet the vision: "...creating places that enrich how people work, play, heal, worship, discover, learn and travel—places that improve how people live".

The enclave's masterplan was designed by HOK, New York, one of the world's leading architectural firms. The location of each facility within Brigade Gateway has been logically planned, with entrance and exit gates maximising privacy and facilitating smooth vehicular movement.



This is an enclave that features many 'biggests, tallests and bests'—most of which are set around a man-made lake.

The iconic World Trade Center Bangalore, built to Grade A++ specifications, is arguably Bangalore's tallest building and Orion Mall is one of the largest in the city. The enclave also features the 200-bed Columbia Asia Hospital; Sheraton Bangalore Hotel, connected to WTC Bangalore and Orion Mall by sky bridges; a 9-level car park, the Galaxy Club and The Brigade School. And then there are the residences. The 1200+ apartments that make up the residential section encircle a series of landscaped, fountain-filled courtyards. The residential section is in the process of being occupied...giving life to a living, working and recreational environment that will set new standards in urban lifestyles.

State-of-the-art office facilities by Brigade
Corporate Offices • IT/BPO Facilities



SUMMIT @ BRIGADE METROPOLIS

Summit A & B @ Brigade Metropolis, Mahadevapura, Whitefield Road

8,30,000 sft spread across 2 towers connected by sky-bridges at 5 levels
Large floor plate • Ideal for IT/ITES/BPOs • Multi-level car parking (6 levels)
Cafeteria • Amphitheatre • Swimming pool • Gym • Helipad

World Trade Center Bangalore @ Brigade Gateway

Malleswaram-Rajajinagar
(for details, please see sheet 4)

Brigade Business Suites, Next to Ashoka Pillar, Jayanagar

1,040 sft to 1,680 sft • Scalability up to 2,750 sft

Brigade Rubix, HMT Township

Ideal for IT / Corporate offices: 2,20,000 sft
Multi-occupant office spaces 1,300 sft to 2,000 sft

Brigade Bhuwalka Icon, Whitefield Road

3B+G+11 level structure • +4,00,000 sft
Designed for multi-occupants • 30,000 sft floor plate

Brigade IRV Centre, Near GE Campus, Whitefield

Floor plate area: 19,400 to 43,300 sft • 3,00,000 sft
Multi-occupant offices ranging from 2,400 sft to 10,000 sft

Brigade Point, Gokulam Road, Mysore

Office space of 25,000 sft and retail space of 10,000 sft

SEZs in Kochi (8,00,000 sft) and Mangalore (2.5 million sft)

Ph: +91-80-40467666 Fax: +91-80-22210784
commercial@brigadegroup.com **BrigadeGroup.com**

Holidays / Festivals in May

- 1 May Day (C, S, Sunday)
 - 6 Basava Jayanthi (C, S, RB)
 - 14 Second Saturday (S)
 - 17 Buddha Poonima (R)
- S—State
C—Central
R—Restricted
RB—Restricted in Brigade



WORLD TRADE CENTER COLOMBO. TWIN TOWERS WITH THE BANK OF CEYLON TOWER TO THE LEFT AND THE PRESIDENTIAL SECRETARIAT IN THE FOREGROUND

M	T	W	T	F	S	S
		1	2	3	4	5
6	7	8	9	10	11	12
13	14	15	16	17	18	19
20	21	22	23	24	25	26
27	28	29	30			

June 2011



For a better quality of life,
upgrade to Brigade

**Brigade Gateway:
For a better quality of life**

The environment:

- A gracious, landscaped 40-acre neighbourhood
- Well planned apartments.
- Confidence that your neighbourhood will stay the way it is—with no unpleasant surprises coming up next door.

Traffic, traffic flow and parking:

- **Multiple, dedicated entry / exit points to the enclave:** 7 gates at strategic locations.
- **Ample parking available:** A dedicated Multi-Level Car Park. Underground parking in most areas.

Privacy and security:

- Modern building monitoring, fire and security systems.
- Electronic access-control and monitoring systems.
- Reliable security for a second layer of protection.



CYCLING IN BRIGADE GATEWAY CAMPUS.

Gardens, greenery and walks:

- **Residential section:** Courtyards and gardens, water bodies, seating, play areas and pathways.
- **Other areas:** All the enclave's facilities surrounded by their own landscaped gardens.

Brigade Gateway is home to:

- **WTC Bangalore.**
- **Sheraton Bangalore Hotel:** A 230-room 5-star hotel.
- **Galaxy Club:** Sports and fitness facilities, fine dining, social and recreational facilities and areas, swimming pool.
- **Orion Mall:** Leading national and international brands, supermarket, food courts and a 11-screen multiplex.
- **Columbia Asia Hospital:** 200-bed hospital with advanced medical facilities that offers multi-specialty services.
- **The Brigade School:** A co-educational school run by Brigade Foundation.

State-of-the-art retail facilities by Brigade



ORION MALL @ BRIGADE GATEWAY



ORION MALL @ BANASWADI

ARTIST'S IMPRESSION

Orion Mall @ Brigade Gateway, Malleswaram-Rajajinagar

A lifestyle mall • India's largest multiplex with 11-screens, managed by PVR
Anchor stores—PVR Cinemas, Westside, Star India Bazaar, Landmark, Debenhams, Blu-O, Wills Lifestyle, Zara, Guess, Body Shop, Samsonite, Black Label, Chemistry, Louis Philippe, Van Heusen, Allen Solly, Reebok, Rockport, Magnet, VLCC, Samsung
• One of the largest food court and entertainment zones in India
• A wide choice of retail spaces

Arcade @ Brigade Metropolis, Mahadevapura, Whitefield Road

The neighbourhood shopping complex, ideal for retail stores and small offices

Orion Mall @ Banaswadi—300,000 sft catering to a premium segment

Brigade Solitaire, Residency Road—21,000 sft

Premium retail space in the heart of the city

Brigade Broadway, K. G. Road—100,000 sft

Brigade Vantage, Vinobha Road, Mysore—140,000 sft

Brigade Vantage, OMR, Chennai
20,000 sft to 150,000 sft

Ph: +91-80-40467666 Fax: +91-80-22210784
retail@brigadegroup.com **BrigadeGroup.com**

WORLD TIMES Based on (+) or (-) Indian Standard Time (IST)

Australia		Singapore	2:30	(+)
• Perth	2:30	South Africa	3:30	(-)
• Brisbane	4:30	Thailand	1:30	(+)
China	2:30	UAE	1:30	(-)
Germany	4:30	UK	5:30	(-)
Japan	3:30	USA and Canada		
Kenya	2:30	• Pacific time	13:30	(-)
Kuwait	2:30	• Mountain time	12:30	(-)
Malaysia	2:30	• Central time	11:30	(-)
New Zealand	6:30	• Eastern time	10:30	(-)
Nigeria	4:30			

Holidays / Festivals in June

11 Second Saturday (S)

S—State



July 2011

M	T	W	T	F	S	S
				1	2	3
4	5	6	7	8	9	10
11	12	13	14	15	16	17
18	19	20	21	22	23	24
25	26	27	28	29	30 BRIGADE FEST	31



WORLD TRADE CENTER DUBAI

**At Brigade Gateway:
Orion Mall, Sheraton Bangalore Hotel
and Columbia Asia Referral Hospital.**

World Trade Center Bangalore is next-door neighbour—and connected by aerial walkways—to Sheraton Bangalore Hotel and Orion Mall.

Orion Mall

Covering 1.1 million sqft—with 4 floors of retail space, a 4-storey atrium, 650 foot frontage and 2-level-parking—Orion is one of Bangalore's largest malls. Orion offers a retail mix of shopping, F&B and entertainment. With its central location; rich catchment area; easy access and connectivity; ample parking; the latest international inputs in architecture, infrastructure, design and ambience; it has a USP guaranteed to draw footfalls. It is connected by skyway and walkway to the Sheraton Bangalore Hotel and WTC Bangalore.



ARTIST'S IMPRESSION

Sheraton Bangalore Hotel

The 230-room hotel at Brigade Gateway will be managed by Sheraton. It will have everything one would expect in a 5-star hotel, including state-of-the-art banquet and conferencing services. Apart from a well-equipped health club, the hotel will have an Angsana spa, managed by the well known Banyan Tree Hotels & Resorts. The Sheraton Bangalore Hotel will be connected to WTC Bangalore and Orion Mall by sky-bridges.



ARTIST'S IMPRESSION



Columbia Asia Hospital

Columbia Asia Hospital at Brigade Gateway is a 200-bed multi-specialty facility that offers comprehensive tertiary-level services for cardiac diseases, orthopedics and neuroscience, as well as secondary-level medical care in a complete complement of medical services.

GATEWAY'S COLUMBIA-ASIA HOSPITAL WITH MULTI-LEVEL PARKING AND WTC BANGALORE IN THE BACKGROUND

Corporate Social Responsibility

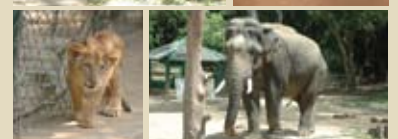
Brigade Group has instituted the annual state-wide Young Achiever Award, in association with Rotary Bangalore Midtown—to recognise the achievements of young people in Karnataka (This is the fifth year since its institution).



The Young Achiever Award 2010 Winners with Rotarians, Brigadiers and Chief Guest Prakash Padukone (former World Badminton Champion) For details: www.youngachiever.in

Over the 24 years of Brigade's evolution, we have taken many other initiatives as corporate citizens, in Bangalore and Mysore.

- Developed and constructed the further extension of 24th Main Road in J.P. Nagar, Bangalore, now known as Brigade Millennium Road.
- Installed a statue of Swami Vivekananda at Ulsoor.
- Brigade Group is proud to be associated with the Animal Adoption Scheme of Bangalore's Bannerghatta Biological Park. We are adoptive parents to two birds (a peacock and Khaleeja pheasant) and three animals (an elephant, hippopotamus and lion cub)!



Ph: +91-80-40467666 Fax: +91-80-2221 0784 enquiry@brigadegroup.com
BrigadeGroup.com

Holidays / Festivals in July

- 9 Second Saturday (S)
- 30 Brigade Fest

S—State



LAKESIDE PROMENADE AT BRIGADE GATEWAY

CONCEPT IMAGE

M	T	W	T	F	S	S
1	2	3	4	5	6	7
8	9	10	11	12	13	14
15 <small>INDEPENDENCE DAY</small>	16	17	18	19	20	21
22	23	24	25	26	27	28
29	30	31 <small>RAMZAAN</small>				

August 2011



At Brigade Gateway: Residences, Galaxy Club, The Brigade School ...and the lake.

This truly international setting is home to:

Residences

The residential section of Brigade Gateway has over 1,200 luxury apartments and penthouses.

The Lake (and Promenade)

The man-made lake is at the heart of Brigade Gateway. A Promenade runs along the lake—creating a partly shaded place to walk during the day, a very well-lit area to stroll along at night, and lakeside cafés near Orion Mall.



GATEWAY RESIDENCES INAUGURAL EVENING.

Galaxy Club

The Galaxy Club offers a range of social, recreational, sports and fitness facilities: swimming pool; indoor games (Badminton, Squash, Snooker & Billiards, Table Tennis); a fully equipped gymnasium with cardio and weights section; steam room; salon; library; restaurant; coffee shop and party room.



NEBULA RESTAURANT AT GALAXY CLUB.

The Brigade School

The Brigade School @ Malleswaram is the third school set up by Brigade Foundation. The school has classes extending from Nursery to Standard 6. New standards will be added every year up to Standard 12. The co-educational school has large classrooms, well-equipped labs and library; and sports facilities that include a swimming pool.



MAIN ENTRANCE OF THE SCHOOL.

New residential projects in Bangalore



BRIGADE EXOTICA

Brigade Exotica, Old Madras Road
3- and 4-bedroom luxury apartments
2,600 sft to 3,800 sft

Brigade Omega, Thurahalli, Off Kanakapura Road
2- and 3-bedroom luxury apartments
1,300 sft to 1,700 sft

NEW RESIDENTIAL PROJECTS IN OTHER CITIES

Brigade Pinnacle
Derebail, Mangalore
2- and 3-bedroom apartments
1,200 sft to 1,600 sft

Brigade Zenith
Banjara Hills, Hyderabad
4-bedroom premium apartments
4,500 sft to 5,000 sft

Brigade Millennium, Chennai
Mixed-use enclave

Ph: +91-80-40467666 Fax: +91-80-22210784
salesenquiry@brigadegroup.com **BrigadeGroup.com**

RAHUKALA	Sunday	4:30 - 6:00	p.m.
	Monday	7:30 - 9:00	a.m.
	Tuesday	3:00 - 4:30	p.m.
	Wednesday	12:00 - 1:30	p.m.
	Thursday	1:30 - 3:00	p.m.
	Friday	10:30 - 12:00	noon
	Saturday	9:00 - 10:30	a.m.

Holidays / Festivals in August

12	Varamahalakshmi Vratha (R, RB)	
13	Second Saturday (S)	
15	Independence Day (C, S)	S—State
26	Jumat-ul-veeda (R)	C—Central
31	Swarna Gowri Vratha / Ramzaan (C, S, RB)	R—Restricted
		RB—Restricted in Brigade



WORLD TRADE CENTER BAHRAIN

M	T	W	T	F	S	S
			1 GANESH CHATURTHI	2	3	4
5	6	7	8	9	10	11
12	13	14	15	16	17	18
19	20	21	22	23	24	25
26	27 MAHALAYA AMAVASYA	28	29	30		

September 2011



Brigade Gateway is part of a vintage neighbourhood: Malleswaram

Legend has it that R. K. Narayan named his imaginary and much-loved Malgudi after Malleswaram and Basavanagudi.

Why Malleswaram was developed

One of the city's oldest layouts, Malleswaram is said to have been 'founded' by Sri Venkatranga Iyengar, who was connected with the municipality. When expansion of the city was being planned, his suggestion to develop *Kaadu* (jungle) *Malleswara* was taken seriously. Malleswaram came into being in 1898 and was fuelled by a more



KAADU MALLESWARA TEMPLE.

practical and specific purpose: to decongest the city during the plague outbreak.

A 'model hygienic suburb'

According to city historian Janaki Nair, the Bangalore and Mysore Directory, 1905 records that 291 acres were acquired for Malleswaram. It was promoted as a 'model hygienic suburb', well spaced and drained.

Nostalgia and memories

To many Bangaloreans, Malleswaram symbolises the cultural heart of Bangalore. Much loved 'Malleswaram icons' include the tree-shaded 'crosses' filled with generations-old, family run stores; Central Tiffin Rooms or CTR; the old Malleswaram railway station; Malleswaram market; Canara Union Club and Hall; St Peter's Pontifical Seminary; the 17th century Kaadu Malleswara and Nandi Teertha temples; and educational institutions ranging from Malleswaram Boys School to MES College to the Indian Institute of Science.



INDIAN INSTITUTE OF SCIENCE.

Brigade Value Homes Affordable Housing. Brigade Quality.

Even those who thought they could not afford an apartment, can buy one now.

Brigade Value Homes projects will be located at:

- Devanahalli—North Bangalore
- Kanakapura Road (near Art of Living)—South Bangalore
- Mysore Road—West Bangalore
- Whitefield-K.R. Puram—East Bangalore



BRIGADE MEADOWS, KANAKAPURA ROAD

Amenities: Swimming pool, Clubhouse with gymnasium, Indoor games room, Party area, Landscaped garden, TV connection, etc.

For more details:

Ph: +91-80-40467666 Email: valuehomes@brigadegroup.com
BrigadeGroup.com

IMPORTANT PHONE NUMBERS (BANGALORE)

EMERGENCY SERVICES: Police 100 Fire 101 Ambulance 102
Traffic / Accidents 103 Railway 139 / 2287 1057 Senior Citizens 1090
Children 1098 Women 1099 Electricity complaint 2225 2035
FIRE FIGHTING SERVICE: Central Control 2297 1600 / 550 / 500

HEALTH

BLOOD BANKS: Rotary-TTK Blood Bank 2529 3486, 2528 7903
CTC Sanjeevani 1062 HOSMAT 2559 3796 / 7
Mallya Hospital 2227 7979, 2227 7990 / 91 / 92 / 93
Columbia Asia Hospital 3989 8969 (Yeshwantapur), 4179 1000 (Hebbal)
Fortis Hospital 080-6621 4444 / 96633 67253 (Bannerghatta Rd),
080-4199 4444 / 96633 67253 (Cunningham Rd)

JUST DIAL (TALKING YELLOW PAGES): 2333 3333, 6999 9999 (all-India)
BWSSB 24x7 Helpline: 2294-5125, 2294-5127
BESCOM (24-hour): 1-800-425-2627
BBMP Central Control Room: 2266-0000
BIAL (24-hr): General Enquiry & Flight Enquiry: +91-80-6678 2251 / 2255

Holidays / Festivals in September

- | | | |
|----|------------------------------|--------------------------|
| 1 | Ganesh Chaturthi (C, S) | |
| 9 | Thiruvonam (R, RB) | S—State |
| 10 | Second Saturday (S) | C—Central |
| 27 | Mahalaya Amavasya (C, S, RB) | R—Restricted |
| | | RB—Restricted in Brigade |



WORLD TRADE CENTER BEIJING. WTC TOWERS ON THE LEFT, WITH CHINA WORLD HOTEL IN LEFT FOREGROUND.

M	T	W	T	F	S	S
31					1	2 GANDHI JAYANTHI
3	4	5 AYUDHA POOJA	6 VIJAYADASAMI	7	8	9
10	11	12	13	14	15	16
17	18	19	20	21	22	23
24	25 NARAKA CHATURDASI	26	27 BALI PADYAMI	28	29	30

October 2011



For a better quality of life,
upgrade to Brigade

The Enclave: A Pocket of Orderly Development



Ever heard the term 'elegant density'?

It's an idea that's at the heart of modern urban planning all over the world.

A growing movement, New Urbanism recognises dense, mixed-use neighborhoods as the building blocks of sustainable communities and regions...and the key to the health and survival of cities and communities. 'Elegant density' is a phrase that may have been created to describe life at a modern, mixed-use enclave. Typically, such an enclave would be a truly self-contained urban neighbourhood, with apartments, stores, offices, leisure and entertainment facilities, parks and gardens. Depending on the complexity of the project, an enclave could even have its own school or hospital.

Each zone is exclusive to itself: set in its own separate area, with well-monitored entrance and exit points. Together, the different zones form a cohesive, convenient and connected urban space... offering a range of modern services and facilities that are easily accessible.

BRIGADE HOSPITALITY

HOTELS & RESORTS | SERVICED RESIDENCES | CLUBS
WEDDINGS AND BANQUETS | CONFERENCES

Brigade Hospitality Clubs—Enhancing Lifestyles

A membership at any of the clubs managed by Brigade Hospitality is a gateway to a healthier and fuller life. The range of sports facilities provided at the clubs ensures that there are avenues to exert oneself—young or elderly. The restaurants, party halls, meeting spaces are all conducive to networking and socialising, be it for business or leisure.

Our currently managed clubs are testimonial to this.



THE WOODROSE CLUB.



THE AUGUSTA CLUB.

Introducing Brigade Hospitality's newest member: The Galaxy Club

The Galaxy Club, with its elegant architecture and aesthetically pleasing décor, creates an ambience designed to relax and refresh the entire family. Galaxy Club is located within the Brigade Gateway campus and has a range of superlative sporting and lifestyle facilities which include:

Dining: • A multi-cuisine restaurant • A boutique Coffee Shop which captures the flavours of Chikmagalur.

Sports Facilities: • Two swimming pools for adults • One swimming pool for children • Squash • Two Badminton courts • Snooker • Tennis • Table Tennis.

Health Facilities: • Gymnasium with separate cardio and weights section and trained instructors • Multi-purpose area for conducting Yoga and Karate classes • Health Club with a Sauna, Steam room and separate Massage sections.

Entertainment Areas: • Outdoor area for entertainment • Two banquet halls to conduct smaller parties/events.

Conferencing Facilities: • A fully equipped Board Room • Two banquet halls • In-house catering services • Dedicated event management team • Central location in North Bangalore.

For membership details, please contact:

Ph: +91-80-4153 7295 memberships@galaxyclub.in galaxyclub.in

Holidays / Festivals in October

- 2 Gandhi Jayanthi (C, S, Sunday)
- 5 Ayudha Pooja (C, S)
- 6 Vijayadasami (C, S)
- 8 Second Saturday (S)
- 18 Tula Sankramana (R)
- 25 Naraka Chaturdasi (C, S)
- 27 Bali Padyami (C, S, RB)

S—State
C—Central
R—Restricted
RB—Restricted in Brigade



RESIDENCES AT BRIGADE GATEWAY. VIEW FROM WTC BANGALORE, ACROSS THE LAKE.

M	T	W	T	F	S	S
	1 KANNADA RAJYOTSAVA	2	3	4	5	6
7 BAKRID	8	9	10	11	12	13 KANAKADASA JAYANTHI
14	15	16	17	18	19	20
21	22	23	24	25	26	27
28	29	30				

November 2011



Pioneering Well Planned Mixed-use Enclaves

“Communities can be shaped by choice or they can be shaped by chance. We can keep on accepting the kind of communities we get or we can start creating the kind of communities we want.”

—Richard Moe, President, National Trust for Historic Preservation, USA

As pioneers of the integrated enclave concept in Bangalore, our first major enclaves were **Brigade Gardenia** and **Brigade Millennium**, both in J.P. Nagar—that set the benchmarks for enclave living in Bangalore.

Benchmarks, however, are created to be surpassed. So then came **Brigade Metropolis** and **Brigade Gateway**—which combined many path-breaking elements to create environments that were satisfyingly larger than the sum of their parts.



BRIGADE METROPOLIS.

Brigade Metropolis is a 40-acre enclave in Whitefield that includes a residential section with 1600+ apartments; landscaped theme gardens; The Regent Club; Summit A & B, office towers with 8,30,000 sft of state-of-the-art office space; and Arcade, the 80,000-sft neighbourhood shopping centre. The Brigade School is just a short distance away.

And then there is the subject of this calendar: **Brigade Gateway** ... our most recent enclave.

BRIGADE HOSPITALITY

HOTELS & RESORTS | SERVICED RESIDENCES | CLUBS
WEDDINGS AND BANQUETS | CONFERENCES

Grand Mercure Bangalore

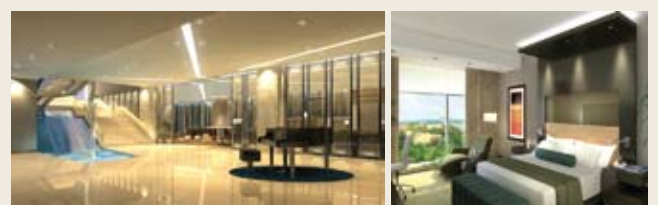
Brigade Hospitality has tied up with many international hospitality brands for its upcoming hotels. The partnership with Accor Group has produced the successful Grand Mercure.

The Grand Mercure Bangalore encompasses a desirable location, strong individual personality and is unique to its environment. It is authentic and original in expressing the spirit of its location and highly personalised with thoughtful attention to detail.

Its features include: • 126 Suite-style rooms • “12th Main” Mediterranean and Regional Indian restaurant • “By the Blue” poolside Indian restaurant • The Gym • Independent/Separate Children’s Pool • Spa and Salon



The Sheraton Bangalore Hotel @ Brigade Gateway



LOBBY.

GUEST ROOM.

The partnership with Starwood Hotels and Resorts will result in the most awaited hotel of the year. The Sheraton Bangalore Hotel at Brigade Gateway is scheduled to be launched in March 2011.

This is the first newly built and managed Sheraton hotel in India. Its features include: • 230-rooms • A variety of restaurants and a poolside bar • Superlative conferencing and meeting facilities • An Angsana Spa managed by Banyan Tree Hotels and Resorts • A Health Club and Swimming Pool.

Holidays / Festivals in November

- 1 Kannada Rajyotsava (S)
- 7 Bakrid (C, S, RB)
- 10 Gurunanak Jayanthi (R)
- 12 Second Saturday (S)
- 13 Kanakadasa Jayanthi (S, RB)

S—State
C—Central
R—Restricted
RB—Restricted in Brigade



© SILVERSTEIN PROPERTIES, INC.

December 2011

M	T	W	T	F	S	S
			1	2	3	4
5	6 <small>LAST DAY OF MUHARRAM</small>	7	8	9	10	11
12	13	14	15	16	17	18
19	20	21	22	23	24	25 <small>CHRISTMAS</small>
26	27	28	29	30	31	



For a better quality of life,
upgrade to Brigade

WORLD TRADE CENTER NEW YORK IN LOWER MANHATTAN.

CONCEPT IMAGE

Giving your business the global edge



WTC Bangalore presents a world of opportunities to its tenants. Some of the facilities and services a WTC tenant would benefit from include:

Trade Information Services

Pertinent, up-to-date and reliable data, to keep abreast of market conditions around the globe. Information covers business opportunities; market surveys and company lists, with all relevant details; technical information such as foreign and local regulations, taxes, laws and rates; and specialised local information from other WTCs.

Display and Exhibit Facilities

Display and exhibition facilities to showcase your services.

Business Services

To increase reach and agility, a range of services that include: short-term office space, telecommunication / video conferencing / tele-presence facilities, secretarial services and meeting and conference facilities.

Tenant Services

The components of a successful tenant services programme include

- Maintenance
- Building amenities
- Special events
- Concierge services
- Special marketing/publicity
- Access to other programme
- Tenant communications
- Security

Conference Facilities

Convenient and professional locations for business discussions, corporate training and similar events.

Quality education in an outstanding environment, across three different schools.



Three co-educational schools
Three different locations
One approach and vision

The Brigade Schools are established and managed by Brigade Foundation, a not-for-profit Trust established by Brigade Group.



Administrative Office:
Brigade Foundation, 34, Cunningham Road, Bangalore 560 052.
Ph: +91-80-4114 8397 enquiry@brigadeschools.org brigadeschools.org

Holidays / Festivals in December

- 6 Last day of Muharram (C, S, RB)
- 10 Second Saturday (S)
- 25 Christmas (C, S, Sunday)

S—State
C—Central
RB—Restricted in Brigade